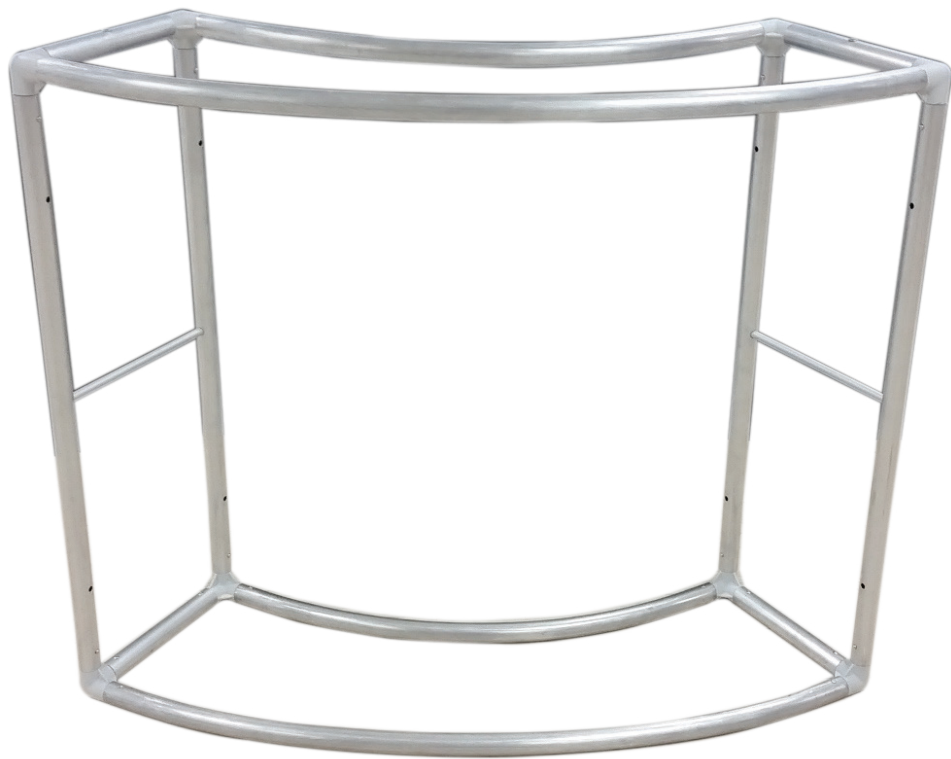


# **EZ FABRIC** **COUNTER**

---

## SET UP INSTRUCTIONS



**EZ FABRIC**  
**COUNTER**

# PARTS OVERVIEW

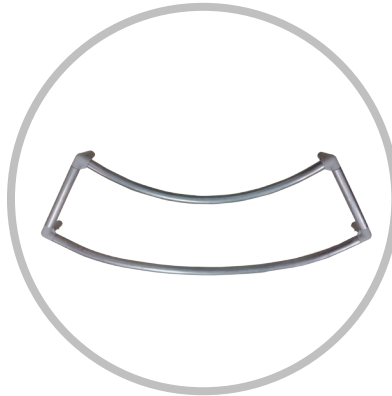
---

Please note that these instructions reference the EZ Fabric Counter curved single. Please remove all of the contents from the box. Below is an overview of what is included.

**A**



**B**



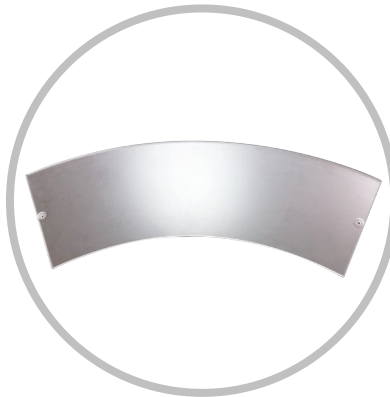
**C**



**D**



**E**



**F**



A. Top base - Qty.1  
(pre-drilled for acrylic counter)

B. Bottom base - Qty.1

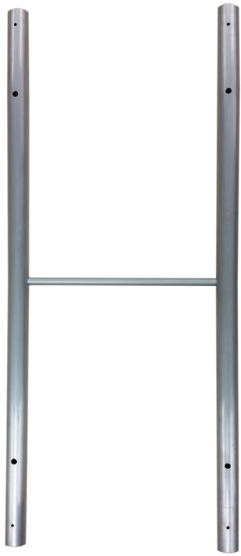
C. 33" Vertical support bar - Qty.4

D. 13.25" Horizontal support bar - Qty.2

E. Acrylic counter top - Qty.1

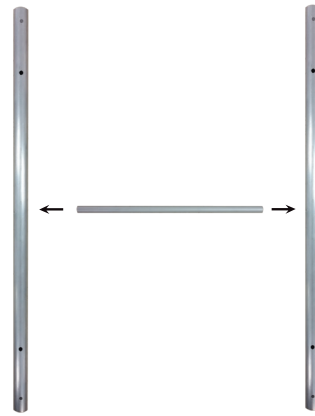
F. Large head bolts - Qty.2

1



First, start by building both vertical sides of the EZ Fabric Counter (shown above).

2



Take (2) 33" support bars and (1) 13.25" support bar and connect them as shown above. Repeat the same process for another set.

3



Set out your bottom base on a flat surface. Be sure not to confuse this base with the top, which has (2) pre-drilled holes for the acrylic counter top. Locate the push-out caps on the inside of the posts.

4



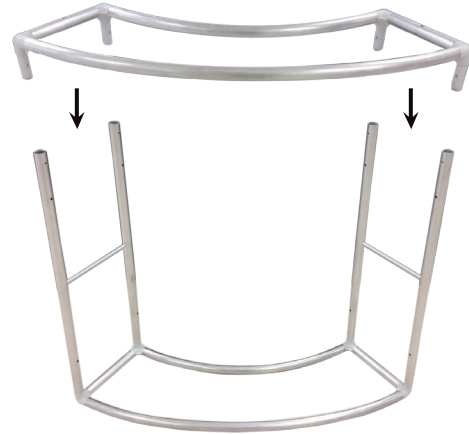
Push in and then hold the push-out cap on the bottom base so the support bar will slide on. Now slide each bar completely on to the bottom base. You will slide in one push-out cap at a time.

5



The frame is now ready for the top base. Make sure it appears as shown above.

6



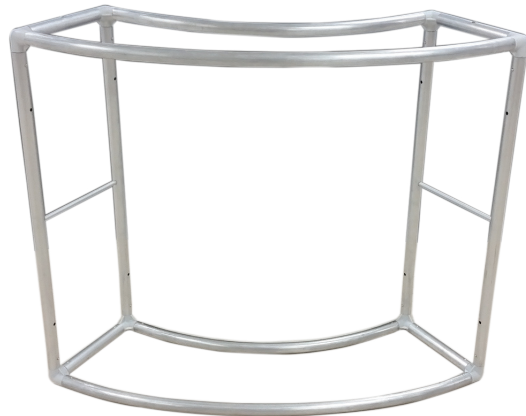
Slide on the top base just as mentioned in step 4.

7



Be sure that there is (1) pre-drilled hole on each side, facing up on the top base.

8



The frame is now ready to be fitted with the graphic



9



Starting from the bottom, slide the graphic on to the frame.

10



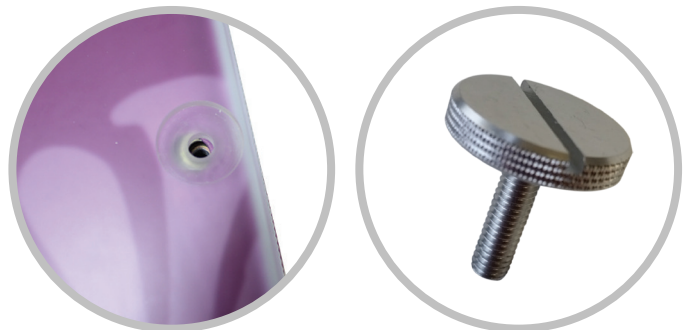
Zip up the graphic around the frame.

11



Locate the pre-drilled hole on the top base. Make sure this hole aligns with the finished hole on the graphic.

12



Align the acrylic counter top holes and insert the large head screws to secure the counter top to the frame.

13



The install is now complete.